

## PUBLIC UTILITIES COMMISSION

505 VAN NESS AVENUE  
SAN FRANCISCO, CA 94102-3298



January 31, 2020

**Subject: Estrella Substation and Paso Robles Area Reinforcement Project (A.17-01-023) – Proposed Power Line Alignment Change and Undergrounding Options Being Considered / Announcement of Behind-the-Meter Solar plus Storage Adoption Propensity Analysis Results**

Dear Project Stakeholder,

The proposed alignment for the new 70 kilovolt (kV) power line component of the Estrella Substation and Paso Robles Area Reinforcement Project (Proposed Project) has changed in the area of Golden Hill Industrial Park. As shown in the attached **Figure 1**, the proposed new 70 kV power line would now follow Germaine Way north past the cul-de-sac and then turn west behind the existing winery and industrial buildings before turning north on Golden Hill Road. This project change is required because a building is expected to be constructed along the power line alignment originally proposed. The project applicants learned about the building after submittal of their original application.

The California Public Utilities Commission (CPUC) is now considering two potential undergrounding options in the area of Golden Hill Industrial Park, as shown in the attached **Figure 2**. Undergrounding Option #1 would follow Germaine Way, Wisteria Lane, and Golden Hill Road. Undergrounding Option #2 would follow the updated 70 kV power line alignment as now proposed. Pacific Gas & Electric Company (PG&E) is currently in the process of developing designs for these two undergrounding alternatives. The alternatives will be evaluated in the Draft Environmental Impact Report.

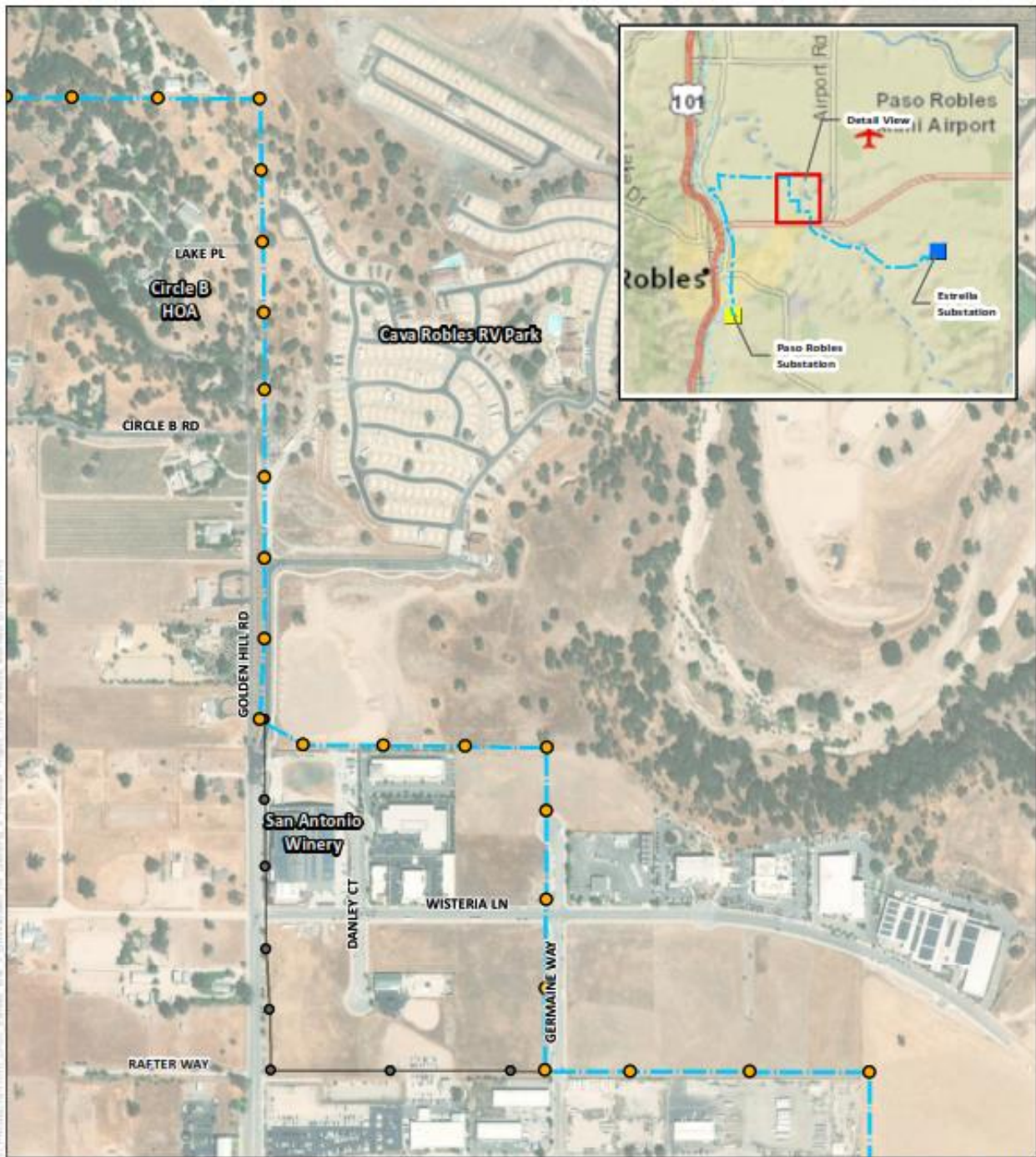
Finally, the CPUC has completed a behind-the-meter (BTM) adoption propensity analysis for its review of potential alternatives to the Proposed Project. This analysis is a continuation of the preliminary evaluation of potential alternatives documented in the Draft Alternatives Screening Report (ASR). BTM storage was identified as Alternative Battery Storage #3 in the Draft ASR. The new BTM Solar plus Storage Adoption Propensity report (**BTM Report**) is being circulated as a supplement to the Draft ASR. The BTM Report will be available for download at: [www.cpuc.ca.gov/environment/info/horizonh2o/estrella/index.html](http://www.cpuc.ca.gov/environment/info/horizonh2o/estrella/index.html)

For questions about the contents of this notice and/or the Proposed Project's California Environmental Quality Act (CEQA) review process, please contact Tom Engels, Horizon Water and Environment, at 916/790-8548.

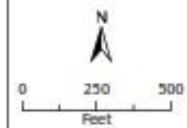
Sincerely,

A handwritten signature in black ink, appearing to read "Robert Peterson".

Robert Peterson  
Project Manager  
Energy Division, CEQA Unit



Reference Source: Esri, DigitalGlobe, GeoEye, Earthstar Geographics, CNES/Airbus DS,



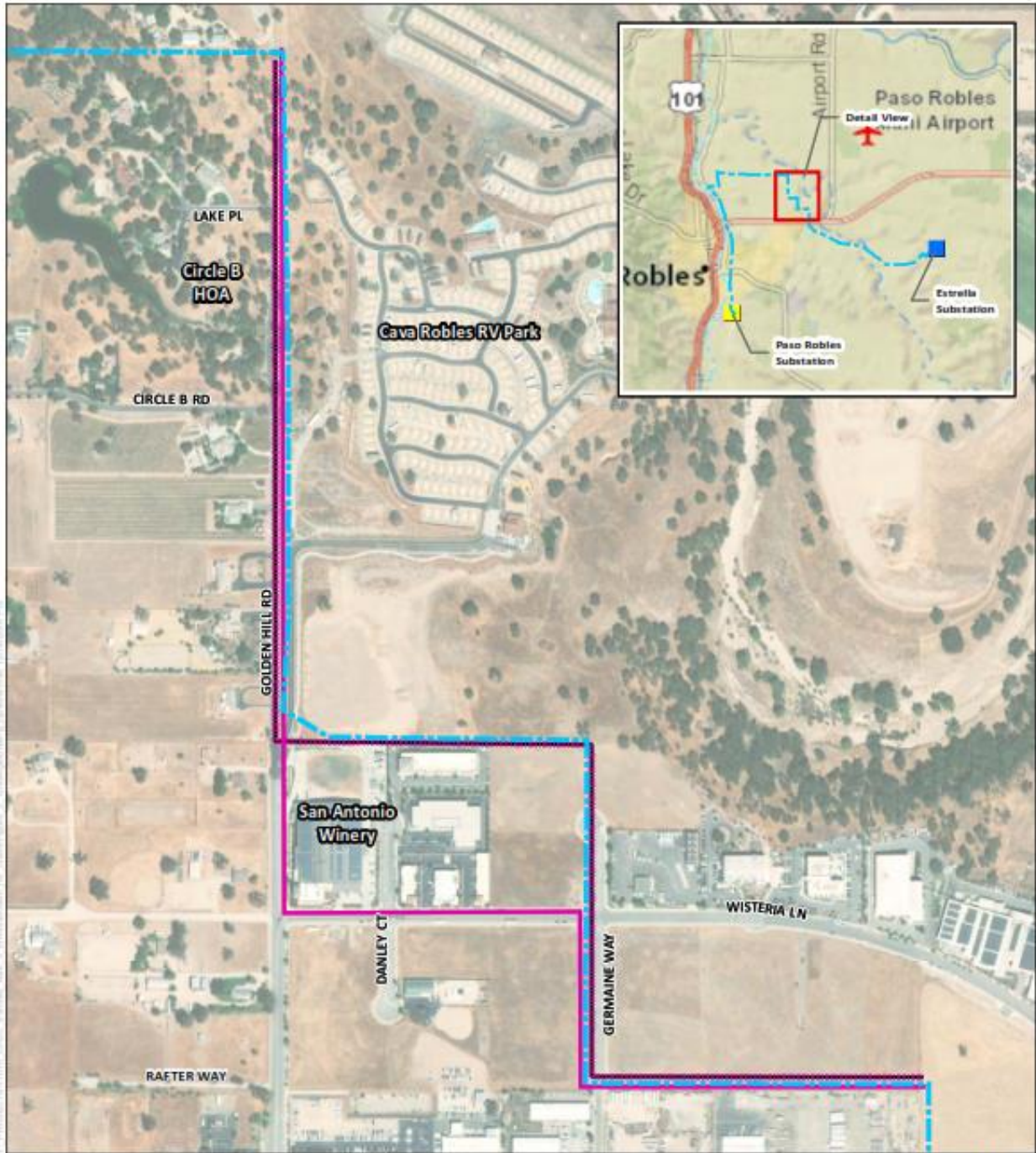
- Proposed 70 kV Poles
- Proposed 70 kV Power Line Segment
- Old Pole Locations (no longer proposed)
- Old Power Line Route (no longer proposed)

**Figure 1**  
Proposed Project 70 kV Reroute



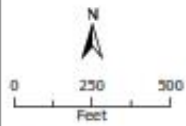
Source: NREIT West and PG&E 2019

Estrella Substation and Paso Robles Area Reinforcement Project



Swearing Source: Per, DigitalGlobe, GeoEye, Earthstar Geographics, CNES/Airbus DS,

**Figure 2**  
 Undergrounding Options



- Proposed Project 70-kv Route
- Undergrounding Option 1
- Undergrounding Option 2

Note: The route variations shown are offset in order to display the alignments of the alternative routes.



Source: NREIT West and PG&E 2019

Estrella Substation and Paso Robles Area Reinforcement Project